

7/16UNF BARREL BOLT FITTING INSTRUCTIONS

NOTE

When installed in accordance with these instructions, this component will provide the required degree of protection to the wearer in most type of accidents.

- The seat belt assembly and any accessories should be installed by a competent mechanic or an authorized seatbelt restraint fitter at an appropriate fitting station.
- These fitting instructions should be read carefully before commencing installation of belt.

BARREL BOLT INFORMATION

- Barrel Bolt measures approximately (L) 59mm x (T) 14mm x (H) 18mm as shown in Fig.1.
- Check with your local Road Transport Authority, Authorized Seatbelt Restraint fitter or Engineer overseeing the installation as to requirements regarding:
 - Placement and Installation of Barrel Bolt and suitability for application.
 - Position of Barrel Bolt and structural feasibility of new mounting point.
 - Angle of Barrel Bolt in relation to direction of pull or load.
- Attach the Barrel bolt to the 'B' Pillar as shown in Fig. 2 using the 7/16Unf bolt.
- Suitable for front applications.

WARNING!

- To the installer: Please read the whole of the instructions for installation carefully and consult Klippan Safety Products in the event of doubt as to the method of installation.
- Ensure that the correct installation diagram is followed for your particular vehicle.
- Install the belts directly in accordance with instructions to obtain maximum efficiency. Any deviation could adversely affect the performance of the belt in an accident.
- Any work carried out relating to the modification or creation of new structural seatbelt mounting points needs to be checked and approved by an authorized or qualified engineer.

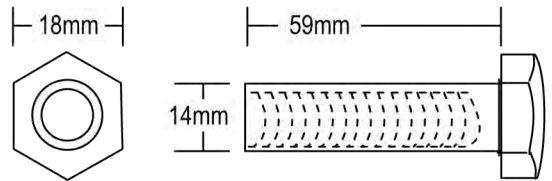


FIGURE 1

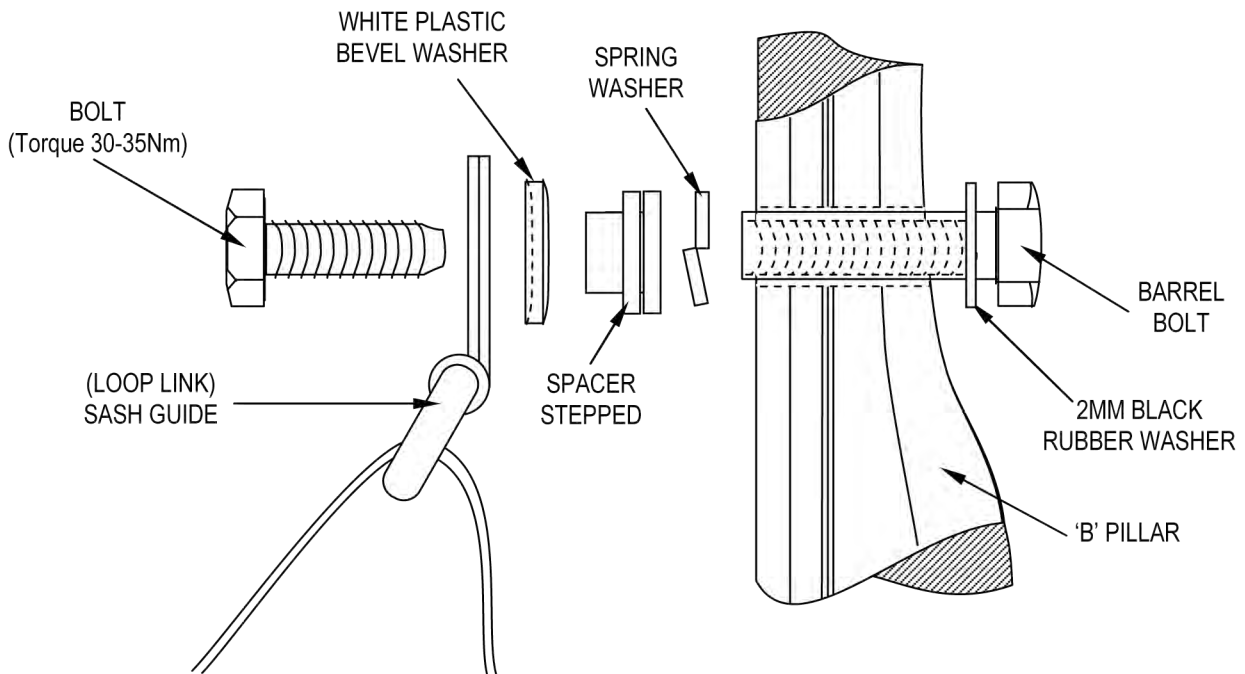


FIGURE 2